

# Spider on My Delbow

## Rhyme Recognition

Kathy Schumacher, MT-BC

The image shows two staves of musical notation in 4/4 time. The first staff has a treble clef and a key signature of one flat (B-flat). The second staff has a bass clef and the same key signature. The melody is simple, with notes corresponding to the lyrics. Chords are indicated above the notes: Gm, D, and Gm. The lyrics are: "There's a spi - der on my (del - bow), spi - der on my (del - bow), spi - der on my (del - bow), alt: ooh ooh ooh. rhymes with (elbow)." The word "alt:" is written below the notes for the final phrase.

Pass out plastic spider rings and fill in the blank with various body parts. Before you start, ask the children to show their answer by placing the spider on their body part instead of saying the answer out loud. This gives everyone a chance to figure out the answer. It also develops the important skill of impulse control.

Examples:

din - chin

dee - knee

doze - nose (or) toes

delly - belly

dist - wrist

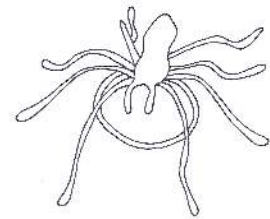
week - cheek

wee - knee

welbow - elbow

woulder - shoulder

wair - hair



This is a great song to use as a filler or transition song while you are collecting instruments or other items. Children can just point with their fingers instead of using an object such as a spider ring. You can also use seasonal objects such as apples or snowflakes.