

# Spider on My Delbow

## Rhyme Recognition

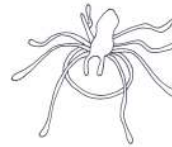
Kathy Schumacher, MT-BC

The musical notation is written on two staves in 4/4 time with a key signature of one flat (Bb). The first staff contains the melody for the first two phrases: 'There's a spi - der on my (del - bow), spi - der on my (del - bow),'. The second staff contains the melody for the final phrase: 'spi - der on my (del - bow), alt: ooh rhymes with ooh. (elbow)'. Chords Gm, D, and Gm are indicated above the notes.

Pass out plastic spider rings and fill in the blank with various body parts. Before you start, ask the children to show their answer by placing the spider on their body part instead of saying the answer out loud. This gives everyone a chance to figure out the answer. It also develops the important skill of impulse control.

Examples:

din - chin	week - cheek
dee - knee	wee - knee
doze - nose (or) toes	welbow - elbow
delly - belly	woulder - shoulder
dist - wrist	wair - hair



This is a great song to use as a filler or transition song while you are collecting instruments or other items. Children can just point with their fingers instead of using an object such as a spider ring. You can also use seasonal objects such as apples or snowflakes.